



*SINGLE SOURCE...
ELECTRICAL & LIGHTING*



***EXIT &
EMERGENCY***

MORRISPRODUCTS.COM

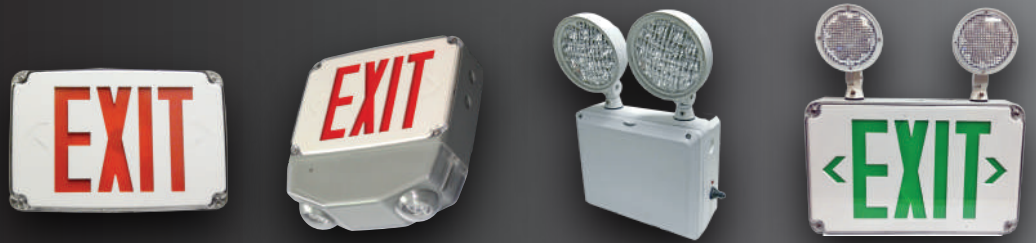
EXIT SIGNS

PG 1-3



COLD WEATHER EXIT/EMERGENCY

PG 4-5



COMBOS

PG 6-7



EMERGENCY LIGHTS

PG 8-10



LAMP HEADS

PG 11



ACCESSORIES / BALLASTS

PG 12





LED EXIT SIGNS



Exit Signs

- Compact, Low Profile Design in Neutral Finish
- Push to Test Switch in Battery Backup Units
- Automatic, Low Voltage Disconnect (LVD)
- 120 or 277 VAC Operation
- Models 73022 - 73025 have Remote Capability for up to 2 Additional LED Remote Lamp Heads
2 heads - 3 hours operation (Base Unit)
3 heads - 2 hours operation (Base Unit + 1 Head)
4 heads - 1.5 hours operation (Base Unit + 2 Heads)
- Injection-Molded, V-0 Flame Retardant, High Impact Thermoplastic Housing
- 2.4V 400mAh Ni-Cad Battery On Standard Units
- 3.6V 1800mAh Ni-Ni-Cad Battery On High Output & Remote Capable Units
- 90 Minute Battery Run Time
- UL 924 Listed for damp locations
- 3 Year Warranty
- See Pg 11 for Remote Lamp Heads

CAT. NO.	LED COLOR	HOUSING COLOR	VOLTS	BATTERY BACKUP	CASE QTY
STANDARD					
73010	RED	WHITE	120/277V	NO	6
73012	RED	WHITE	120/277V	YES	6
73013	RED	BLACK	120/277V	YES	6
73014	GREEN	WHITE	120/277V	NO	6
73016	GREEN	WHITE	120/277V	YES	6
73017	GREEN	BLACK	120/277V	YES	6
REMOTE CAPABLE (USE ONLY 3.6V LED REMOTE HEADS)					
73022	RED	WHITE	120/277V	YES	6
73024	GREEN	WHITE	120/277V	YES	6
73025	GREEN	BLACK	120/277V	YES	6
2 CIRCUIT UNIT WIRED FOR AC POWER & DC GENERATOR BACKUP					
73026	RED	WHITE	120/277V	NO	6
73028	GREEN	WHITE	120/277V	NO	6
STANDARD WITH SELF DIAGNOSTIC					
73512	RED	WHITE	120/277V	YES	6
73514	GREEN	WHITE	120/277V	YES	6
REMOTE CAPABLE WITH SELF DIAGNOSTIC (USE ONLY 3.6V LED REMOTE HEADS) (WILL NOT OPERATE CORRECTLY UNLESS USED WITH REMOTE HEADS)					
73516*	RED	WHITE	120/277V	YES	6
73518*	GREEN	WHITE	120/277V	YES	6

* Self Diagnostic Feature continually diagnoses unit performance and tests system to ensure reliable operation and to meet electrical & Life Safety Codes



CAST ALUMINUM LED EXIT SIGNS



Exit Signs



- Universal 120/277 VAC operation on all exits
- Damp location rated
- Premium grade Ni-Cad rechargeable battery
- Powder Coat Finish
- Quick clip snap closure for front face plate
- Grounded safety cable
- All units include one face plate with legend and flat back panel to allow 1 sided legend display (for 2 sided legend display order separate faceplate with legend - see below)
- 3 Year Warranty

LED CAST ALUMINUM SERIES UTILIZES A UNIQUE ILLUMINATION DESIGN IN AN ARCHITECTURALLY PLEASING HOUSING

CAT. NO.	LETTER COLOR	HOUSING FINISH	VOLTS	FACE COLOR	CASE QTY
73340	RED	BRUSHED ALUMINUM	120/277V	BRUSHED ALUMINUM	6
73343	RED	BLACK	120/277V	BRUSHED ALUMINUM	6
73344	RED	BLACK	120/277V	BLACK	6
73346	RED	WHITE	120/277V	BRUSHED ALUMINUM	6
73348	RED	WHITE	120/277V	WHITE	6
73360	GREEN	BRUSHED ALUMINUM	120/277V	BRUSHED ALUMINUM	6
73363	GREEN	BLACK	120/277V	BRUSHED ALUMINUM	6
73364	GREEN	BLACK	120/277V	BLACK	6
73366	GREEN	WHITE	120/277V	BRUSHED ALUMINUM	6

EXTRA FACE PLATES

73380	RED	BRUSHED ALUMINUM			
73381	RED	BLACK			
73382	RED	WHITE			
73383	GREEN	BRUSHED ALUMINUM			
73384	GREEN	BLACK			
73385	GREEN	WHITE			



SURFACE MOUNT EDGE LIT EXIT SIGNS



CEILING MOUNT



SIDE MOUNT



WALL MOUNT

To Convert Single Sided Fixture to Double Sided Legend:
73320 Red Double Sided Legend Panel
73322 Green Double Sided Legend Panel

CAT. NO.	PANEL COLOR	VOLTS	HOUSING	CASE QTY
SURFACE MOUNT ONE SIDED LEGEND				
73310	RED ON CLEAR	120/277V	ANODIZED ALUMINUM	4
73311	RED ON CLEAR	120/277V	WHITE	4
73312	RED ON CLEAR	120/277V	BLACK	4
73315	GREEN ON CLEAR	120/277V	ANODIZED ALUMINUM	4
73316	GREEN ON CLEAR	120/277V	WHITE	4
73317	GREEN ON CLEAR	120/277V	BLACK	4
SURFACE MOUNT DOUBLE SIDED LEGEND				
73402*	RED ON CLEAR	120/277V	ANODIZED ALUMINUM	4
73403*	RED ON CLEAR	120/277V	WHITE	4
73404*	RED ON CLEAR	120/277V	BLACK	4
73405*	GREEN ON CLEAR	120/277V	ANODIZED ALUMINUM	4
73406*	GREEN ON CLEAR	120/277V	WHITE	4
73407*	GREEN ON CLEAR	120/277V	BLACK	4
DOUBLE SIDED PANELS				
73320	RED DOUBLE SIDED PANEL			
73322	GREEN DOUBLE SIDED PANEL			

* Double Sided fixtures have a Mylar separator in center so you only see EXIT from one side

- Compact, low-profile design
- Emergency battery backup is completely self-contained
- In-Field installable directional indicators
- Premium Grade extruded aluminum housing
- Ni-Cad Battery
- 120/277V
- Solid State electronics and charger board
- Premium high output ultra bright LED's
- UV stabilized ultra clear acrylic panel
- UL Listed
- 3 Year Warranty

RECESSED MOUNT EDGE LIT LED EXIT SIGNS

CAT. NO.	PANEL COLOR	VOLTS	HOUSING	CASE QTY
RECESSED MOUNT ONE SIDED LEGEND				
73330	RED ON CLEAR	120/277V	ANODIZED ALUMINUM	4
73331	RED ON CLEAR	120/277V	WHITE	4
73332	RED ON CLEAR	120/277V	BLACK	4
73335	GREEN ON CLEAR	120/277V	ANODIZED ALUMINUM	4
73336	GREEN ON CLEAR	120/277V	WHITE	4
73337	GREEN ON CLEAR	120/277V	BLACK	4
RECESSED MOUNT DOUBLE SIDED LEGEND				
73412*	RED ON CLEAR	120/277V	ANODIZED ALUMINUM	4
73413*	RED ON CLEAR	120/277V	WHITE	4
73415*	GREEN ON CLEAR	120/277V	ANODIZED ALUMINUM	4
73416*	GREEN ON CLEAR	120/277V	WHITE	4
73417*	GREEN ON CLEAR	120/277V	BLACK	4
DOUBLE SIDED PANELS				
73320	RED DOUBLE SIDED PANEL			
73322	GREEN DOUBLE SIDED PANEL			

* Double Sided fixtures have a Mylar separator in center so you only see EXIT from one side



Good for Sheetrock & Drop Ceilings must have access from above for installation

To Convert Single Sided Fixture to Double Sided Legend:
73320 Red Double Sided Legend Panel
73322 Green Double Sided Legend Panel



OUTDOOR COLD WEATHER & WET LOCATION



2 LEGEND PLATES INCLUDED
BLANK MOUNTING PLATE SOLD SEPARATELY

- Perfect for Outdoor, Commercial & Industrial Facilities
- Dual 120/277 VAC operation
- Push-to-test switch for mandated code compliance testing
- 4.8V 700mah long-life, maintenance-free, Rechargeable Ni-Cad Battery
- Flame Retardant, UV-stabilized White Polycarbonate Housing with Clear Polycarbonate Lens
- Universal Canopy Mount & 2 Face Plates for Side or Top Installation
- EZ Snap-out Chevron Directional Indicators
- Operating Temperature -4°F to +122°F
- Meets UL924 for Wet Locations, NFPA 101 Life Safety Code, NEC & OSHA Codes
- 3 Year Warranty

CAT. NO.	LED COLOR	VOLTS	HOUSING	CASE QTY
73386	RED	120/277V	WHITE	6
73387	RED	120/277V	BLACK	6
73388	GREEN	120/277V	WHITE	6
73389	GREEN	120/277V	BLACK	6
COLD WEATHER SELF DIAGNOSTIC				
73371*	RED	120/277V	WHITE	6
BLANK BACK MOUNTING PLATE (ONE SIDED APPLICATIONS-SOLD SEPARATELY)				
73378	WHITE			1
73379	BLACK			1

* Self Diagnostic Feature performs monthly, bi-annual & annual tests automatically to ensure reliable operation and to meet electrical & Life Safety Codes

Cold Weather / Exit / Emergency

OUTDOOR COLD WEATHER & WET LOCATION COMBO SURFACE MOUNT



- Flame Retardant, UV-Stabilized Polycarbonate Gasketed Housing
- Adjustable LED lamp Heads provide optimal center to center spacing
- 6V 5600mAh maintenance-free, rechargeable Ni-Cad Battery
- Internal Solid-State Transfer Switch automatically connects the internal battery to LED board for minimum 90-minute emergency illumination
- Dual 120/277 voltage
- Top and side KO's provided for conduit feed applications
- Operating Temperature -4°F to +122°F
- Meets UL924 for Wet Locations, NFPA 101 Life Safety Code, NEC, OSHA
- Certified to CEC under Title 20 Regulations
- 3 Year Warranty
- See Pg II for LED Multi Volt Remote Lamp Heads - Cat No: 73303-73306

CAT. NO.	LETTER COLOR	VOLTS	LUMENS PER HEAD	HOUSING COLOR	CASE QTY
FIXTURES INCLUDE TWO LEGEND PLATES					
73375	RED	120/277V	219	WHITE	4
REMOTE CAPABLE					
73376	RED	120/277V	219	WHITE	4
NEW 73369	RED	120/277V	219	BLACK	4
BLANK BACK MOUNTING PLATE (ONE SIDED APPLICATIONS-SOLD SEPARATELY)					
73377			BLANK PLATE		1



OUTDOOR COLD WEATHER WET LOCATION LED EMERGENCY

REMOTE CAPABLE



Remote Capability for up to 2 Additional LED Remote Lamp Heads (Use Only 3.6V LED Remote Heads)

- 2 heads - 3 hours operation (Base Unit)
- 3 heads - 2 hours operation (Base Unit + 1 Head)
- 4 heads - 1.5 hours operation (Base Unit + 2 Heads)

USE ONLY WITH 3.6V LED REMOTE LAMP HEADS

- Flame Retardant, UV-stabilized Polycarbonate Gasketed Housing, Integral Breather Vent & External Mounting Brackets
- 9.6V 1900mah maintenance-free, rechargeable Ni-Cad Battery
- Internal Solid-State Transfer Switch automatically connects the internal battery to LED board for minimum 90-minute emergency illumination
- Dual 120/277 voltage
- Sealed and Gasketed Weatherproof Lamp Heads with chrome reflector and tempered glass lens
- Top and side KD's provided for conduit feed applications
- Meets UL924 for Wet Locations, NFPA 101 Life Safety Code, NEC, OSHA
- Operating Temperature -4°F to +122°F
- 3 Year Warranty
- See Pg 11 for remote lamp heads



CAT. NO.	HOUSING	VOLTS	BATTERY	CASE QTY
73370	POLY-CARBONATE	120/277V	9.6V 1900 MAH NI-CAD	4



INDOOR LED EMERGENCY LIGHTS

WET LOCATION

- This enclosure is ideal for wet locations, resistant to corrosive atmospheres, non-hazardous dust environments, water spray or splashing water
- Dual 120 or 277 VAC input, field selectable
- Solid-state line-latched low voltage disconnect provides 100% load disconnect protection to guard against battery deep discharge
- Tempered Glass Lens
- 6V Lead Acid Battery
- Meets UL924 for Wet Locations, NFPA 101 Life Safety Code, NEC, OSHA
- 3 Year Warranty



CAT. NO.	VOLTS	BATTERY	CASE QTY
73396A	120/277V	NICKEL CADMIUM	4



INDOOR LED COMBO EXIT/EMERGENCY LIGHT

WET LOCATION

- Flame Retardant, UV-stabilized Corrosion & Impact Resistant Polycarbonate Housing with Clear Polycarbonate Cover
- Enclosure Resistant to Corrosive Atmospheres, Non-Hazardous Dust Environment, Hose-Down Water Spray or Splashing Water
- Universal Canopy Mount & 2 Face Plates for Side or Top Installation
- NiCad or Ni-MH battery Backup
- Input Voltage: 120/277
- Meets UL924 for Wet Locations, NFPA 101 Life Safety Code, NEC & OSHA Codes
- 3 Year Warranty
- See Pg 11 for remote lamp heads



CAT. NO.	LED COLOR	VOLTS	BATTERY	LENGTH	DEPTH	HEIGHT	CASE QTY
STANDARD EXIT SIGN							
73452	RED	120/277V	2.4V 500MAH NI-CD	12-5/8"	2-1/2"	8-1/8"	4
73453	GREEN	120/277V	2.4V 500MAH NI-CD	12-5/8"	2-1/2"	8-1/8"	4
REMOTE CAPABLE EXIT SIGN							
73454	RED	120/277V	3.6V 1800MAH NI-MH	12-5/8"	2-1/2"	8-1/8"	4
73455	GREEN	120/277V	3.6V 1800MAH NI-MH	12-5/8"	2-1/2"	8-1/8"	4
STANDARD COMBO HIGH OUTPUT							
73456	RED	120/277V	3.6V 1000MAH NI-CD	12-9/16"	2-1/2"	13-5/16"	4
73457	GREEN	120/277V	3.6V 1000MAH NI-CD	12-9/16"	2-1/2"	13-5/16"	4
REMOTE CAPABLE COMBO HIGH OUTPUT							
73458	RED	120/277V	3.6V 1800MAH NI-MH	12-9/16"	2-1/2"	13-5/16"	4

Models 73454/73055 & 73458 - Remote Capability for up to 2 Additional LED Remote Lamp Heads. See Cat Pg 11

- 2 heads - 3 hours operation (Base Unit)
- 3 heads - 2 hours operation (Base Unit + 1 Head)
- 4 heads - 1.5 hours operation (Base Unit + 2 Heads)



LIGHT PIPE LED COMBO



- Flame Retardant, UV-stabilized High Impact Housing
- Dual 120/277 voltage
- Charge Rate/Power "ON" LED Indicator Light and sealed push-to-test switch for mandated code compliance testing
- 4.8V 900 mAH maintenance-free, rechargeable Ni-Cad battery
- Remote Capable - up to 3 Watts - 4.8V remote lamp heads (see Pg 100 for compatible LED Remote Lamp Heads)
- Top and side KD's provided for conduit feed applications
- Meets UL924 for Wet Locations, NFPA 101 Life Safety Code, NEC, OSHA
- Certified to CEC under Title 24 Regulations
- 3 Year Warranty

CAT. NO.	LED COLOR	VOLTS	HOUSING	LUMENS	WIDTH	DEPTH	HEIGHT	CASE QTY
73372	RED	120/277V	WHITE	184	12.50"	1.87"	8.25"	6
73373	GREEN	120/277V	WHITE	184	12.50"	1.87"	8.25"	6
SELF DIAGNOSTIC								
73374*	RED	120/277V	WHITE	184	12.50"	1.87"	8.25"	6

* Self Diagnostic Feature performs monthly, bi-annual & annual tests automatically to ensure reliable operation and to meet electrical & Life Safety Codes

LED COMBO EXIT/EMERGENCY LIGHT

ADJUSTABLE HEADS

- Completely Self-Contained Fully Automatic Operation
- Push to Test Switch
- Automatic Low Voltage Disconnect (LVD)
- Input Voltage: 120 or 277 VAC Operation
- Injection-Molded, UL 94 V-0 Flame Retardant, High Impact, Thermoplastic Housing
- Universal Mounting Canopy for Top or Back J-box Installation & 2 Snap-fit Face Plates
- 3.6 Volt 900 mAH Sealed Ni-Cad Rechargeable Maintenance-Free Battery
- UL 924 Listed for Damp Locations
- 3 Year Warranty
- See Pg 11 for Remote Lamp Heads

CAT. NO.	LED COLOR	VOLTS	HOUSING COLOR	LUMENS PER HEAD	WIDTH	DEPTH	HEIGHT	CASE QTY
HIGH OUTPUT COMBO								
73462	RED	120/277V	WHITE	76	20"	2"	8.10"	4
HIGH OUTPUT REMOTE CAPABLE COMBO (USE ONLY LED REMOTE HEADS)								
73466	RED	120/277V	WHITE	76	20"	2"	8.10"	4
HIGH OUTPUT COMBO WITH SELF DIAGNOSTIC								
73470	RED	120/277V	WHITE	76	20"	2"	8.10"	4
73472	GREEN	120/277V	WHITE	76	20"	2"	8.10"	4
HIGH OUTPUT REMOTE CAPABLE COMBO WITH SELF DIAGNOSTIC (USE ONLY LED REMOTE HEADS) (WILL NOT OPERATE CORRECTLY UNLESS USED WITH REMOTE HEADS)								
73474*	RED	120/277V	WHITE	76	20"	2"	8.10"	4
73476*	GREEN	120/277V	WHITE	76	20"	2"	8.10"	4

* Self Diagnostic Feature performs monthly, bi-annual & annual tests automatically to ensure reliable operation and to meet electrical & Life Safety Codes



LED COMBO EXIT/EMERGENCY LIGHT

ROUND HEAD



- Fully Automatic Operation
- Push to Test Switch
- Automatic Low Voltage Disconnect (LVD)
- 120 or 277 VAC Operation
- Universal Mounting for Top or Back J-box Installation & 2 Snap-fit Face Plates
- Injection-Molded, UL 94 V-D Flame Retardant, High Impact, Thermoplastic Housing
- Heads Rotate for Maximum Light Field Flexibility
- 3.6 Volt Sealed Ni-Cad Rechargeable Maintenance-Free Battery
- Damp Location Rated
- UL 924 Listed; CSA Listed; DOE & CEC Title 24 Registered
- 5 Year Warranty
- See Pg II for remote lamp heads

CAT. NO.	LED COLOR	VOLTS	HOUSING COLOR	LUMENS PER HEAD	WIDTH	DEPTH	HEIGHT	CASE QTY
				STANDARD				
73040	RED	120/277V	WHITE	33	11.60"	2.00"	7.20"	6
73041	RED	120/277V	BLACK	33	11.60"	2.00"	7.20"	6
73042	GREEN	120/277V	WHITE	33	11.60"	2.00"	7.20"	6
73043	GREEN	120/277V	BLACK	33	11.60"	2.00"	7.20"	6
				HIGH OUTPUT				
73050	RED	120/277V	WHITE	76	11.60"	2.00"	7.20"	6
73052	GREEN	120/277V	WHITE	76	11.60"	2.00"	7.20"	6
HIGH OUTPUT REMOTE CAPABLE (USE ONLY LED REMOTE HEADS)								
73054	RED	120/277V	WHITE	76	11.60"	2.00"	7.20"	6
73055	RED	120/277V	BLACK	76	11.60"	2.00"	7.20"	6
73056	GREEN	120/277V	WHITE	76	11.60"	2.00"	7.20"	6
73057	GREEN	120/277V	BLACK	76	11.60"	2.00"	7.20"	6
HIGH OUTPUT REMOTE CAPABLE WITH SELF DIAGNOSTIC (USE ONLY LED REMOTE HEADS) (WILL NOT OPERATE CORRECTLY UNLESS USED WITH REMOTE HEADS)								
73538*	GREEN	120/277V	WHITE	76	11.60"	2.00"	7.20"	6

* Self Diagnostic Feature performs monthly, bi-annual & annual tests automatically to ensure reliable operation and to meet electrical & Life Safety Codes



LED COMBO EXIT/EMERGENCY LIGHT

SQUARE HEAD



- 120 or 277 VAC Operation
- Push to Test Switch
- Automatic Low Voltage Disconnect (LVD)
- Injection-Molded, UL 94 V-D Flame Retardant
- High Impact, Thermoplastic Housing
- Fully Adjustable Glare-Free LED Lamps
- Heads Rotate 180°+ for Maximum Field Flexibility
- Universal Mounting Canopy for Top or Back J-box Installation & 2 Snap-fit Face Plates
- 3.6 Volt 1000/1800 mAh Sealed Ni-Cad/ Ni-Metal Hydride (Remote Capable Units) Rechargeable Maintenance-Free Battery
- UL 924 Listed for Damp Locations
- 5 Year Warranty
- See Pg II for remote lamp heads

CAT. NO.	LED COLOR	VOLTS	HOUSING COLOR	LUMENS PER HEAD	WIDTH	DEPTH	HEIGHT	CASE QTY
				HIGH OUTPUT				
73432	RED	120/277V	WHITE	76	11.60"	1.75"	7.20"	6
73433	RED	120/277V	BLACK	76	11.60"	1.75"	7.20"	6
73434	GREEN	120/277V	WHITE	76	11.60"	1.75"	7.20"	6
73435	GREEN	120/277V	BLACK	76	11.60"	1.75"	7.20"	6
HIGH OUTPUT REMOTE CAPABLE (USE ONLY LED REMOTE HEADS)								
73442	RED	120/277V	WHITE	76	11.60"	1.75"	7.20"	6
73443	RED	120/277V	BLACK	76	11.60"	1.75"	7.20"	6
73444	GREEN	120/277V	WHITE	76	11.60"	1.75"	7.20"	6



LED EMERGENCY LIGHT

ROUND HEAD



- Fully Adjustable, Glare-Free LED Lamp Heads
- UL 94 V-0 Thermoplastic Housing
- Universal J-box Pattern Mounting Plate with Quick Connect Features
- 120/277 VAC
- 90 Minutes of Emergency Power
- Test Switch, LED Status Indicator Light
- Maintenance Free, Rechargeable Ni-Cad Battery
- 3.6 Volt Sealed Ni-Cad Rechargeable Battery
- UL 924 Damp Location Listed; CEC Registered
- 3 Year Warranty
- See Pg 11 for remote lamp heads

SELF-DIAGNOSTIC VERSION MONITORS BATTERY/CHARGER FAILURE, BATTERY DISCONNECT AND LAMP FAILURE

Models 73114, 73115 & 73524 have Remote Capability for up to 2 Additional LED Remote Lamp Heads

- 2 heads - 3 hours operation (Base Unit)
- 3 heads - 2 hours operation (Base Unit + 1 Head)
- 4 heads - 1.5 hours operation (Base Unit + 2 Heads)

CAT. NO.	COLOR	VOLTS	LUMENS PER HEAD	WIDTH	DEPTH	HEIGHT	CASE QTY
STANDARD							
73118	WHITE	120/277V	33	9"	2.75"	4-3/4"	12
73119	BLACK	120/277V	33	9"	2.75"	4-3/4"	12
HIGH OUTPUT							
73112	WHITE	120/277V	76	9"	2.75"	4-3/4"	12
HIGH OUTPUT REMOTE CAPABLE (USE ONLY LED REMOTE HEADS)							
73114	WHITE	120/277V	76	9"	2.75"	4-3/4"	12
73115	BLACK	120/277V	76	9"	2.75"	4-3/4"	12
STANDARD WITH SELF DIAGNOSTIC							
73522*	WHITE	120/277V	33	9"	2.75"	4-3/4"	12
HIGH OUTPUT REMOTE CAPABLE WITH SELF DIAGNOSTIC (USE ONLY LED HEADS) (WILL NOT OPERATE CORRECTLY UNLESS USED WITH REMOTE HEADS)							
73524*	WHITE	120/277V	76	9"	2.75"	4-3/4"	12

* Self Diagnostic Feature continually diagnoses unit performance and tests system to ensure reliable operation and to meet electrical & Life Safety Codes

LED EMERGENCY LIGHT

SQUARE HEAD



- 120/277 VAC
- UL 94 V-0 Thermoplastic Housing
- Fully Adjustable, Glare-Free LED Lamp Heads
- Universal J-box Pattern Mounting Plate with Quick Connect Features
- Test Switch, LED Status Indicator Light
- 3.6V 900 mAH Maintenance Free, Rechargeable Ni-Cad Battery
- 90 Minutes of Emergency Power
- UL 924 Damp Location Listed
- 3 Year Warranty
- See Pg 11 for remote lamp heads

CAT. NO.	COLOR	VOLTS	LUMENS PER HEAD	WIDTH	DEPTH	HEIGHT	CASE QTY
HIGH OUTPUT							
73424	WHITE	120/277V	76	9"	2.75"	4-3/4"	9
73425	BLACK	120/277V	76	9"	2.75"	4-3/4"	9
HIGH OUTPUT REMOTE CAPABLE (USE ONLY LED REMOTE HEADS)							
73426	WHITE	120/277V	76	9"	2.75"	4-3/4"	9
73427	BLACK	120/277V	76	9"	2.75"	4-3/4"	9

LED EMERGENCY LIGHT

ADJUSTABLE OPTICS



- 120/277 VAC
- Fully Adjustable, Glare-Free LED Lamp Heads
- UL 94 V-0 Thermoplastic Housing
- Universal J-box Pattern Mounting Plate
- Wall or Ceiling Mount
- Test Switch, LED Status Indicator Light
- 90 Minutes of Emergency Power
- 3.6V 900 mAH Maintenance Free, Rechargeable Ni-Cad Battery
- Meets all NFPA 101 Life Safety Code, NEC, OSHA, Local and State Codes
- UL 924 Damp Location Listed
- 3 Year Warranty

CAT. NO.	COLOR	VOLTS	LUMENS PER HEAD	WIDTH	DEPTH	HEIGHT	CASE QTY
73428	WHITE	120/277V	65	9.5"	2.25"	4-5/8"	12
73429	BLACK	120/277V	65	9.5"	2.25"	4-5/8"	12



WET LOCATION ADJUSTABLE LED EMERGENCY LIGHT



- UL94 V-0 Thermoplastic Housing
- Universal Mounting Plate with quick-connect feature
- Dual-Voltage input 120V or 277V AC Operation
- Maintenance-free, 3.6V 900mAh Ni-Cad Rechargeable Battery provides 90 minutes of emergency power
- UL924 Wet Location Rated
- 3 Year Warranty



CAT. NO.	VOLTS	HOUSING	CASE QTY
73398	120/277V	WHITE	6



ADJUSTABLE LED EMERGENCY LIGHT WET LOCATION

- Compatible with drywall & drop ceiling installations
- 6V, pure lead maintenance-free battery
- Automatic, low voltage disconnect (LVD)
- Universal transformer for 120 or 277 VAC
- Injection-Molded, V-0 Flame Retardant, high impact, thermoplastic housing
- Push to test switch
- 90 minute emergency operation
- Prismatic Plastic Lens
- 3 Year Warranty



RECESSED EMERGENCY LIGHTING UNIT MOUNTS FLUSH WITH CEILING FOR A CONCEALED, UNOBTRUSIVE LOOK

CAT. NO.	COLOR	VOLTS	CASE QTY
73158	WHITE	120/277V	6



HI-CAPACITY EMERGENCY LIGHTING UNITS

- Push to test switch
- Charge rate/power on LED indicator light
- Internal Solid State Transfer Switch provides automatic connection to batteries upon loss of AC power
- Automatic low voltage disconnect (LVD).
- Universal transformer for 120 or 277 VAC operation
- Charge rate/power on LED indicator light
- 6V 10Ah or 12 Volt (2) 6V premium grade rechargeable maintenance-free batteries
- UL Listed
- 3 Year Warranty



6 VOLT AND 12 VOLT
REMOTE CAPABILITY, EFFICIENT AND EASY TO INSTALL
COMPLETELY SELF-CONTAINED & FULLY-AUTOMATIC

CAT. NO.	WATTS PER UNIT	VOLTS	MAXIMUM HEADS FOR 4 HRS OPERATION	MAXIMUM HEADS FOR 2 HRS OPERATION	MAXIMUM HEADS FOR 1.5 HRS OPERATION	CASE QTY
6-VOLT UNITS WITH REMOTE CAPACITY 7.2 WATT WEDGE BASE LAMPS						
73166	50W	120/277V	2	5	6	2
73170	100W	120/277V	5	10	13	2
12-VOLT UNITS WITH REMOTE CAPACITY 9 WATT WEDGE BASE LAMPS						
73176	50W	120/277V	2	4	5	2
73180	100W	120/277V	4	8	11	2



RECESSED LED EMERGENCY LIGHTING



FIXED



ADJUSTABLE



- Available with or without Motion Sensor
- Motion Sensor will Activate Light at 1.3 FC or Lower
- PIR Sensor has 125° Sensing Range @15'
- Motion Sensor Turns Light On for 15 minutes (with AC Power)
- 4.8V Ni-MH 1800 mAh Rechargeable Battery
- Illuminance: 1 to 2 FC within 1 Foot
- Mounts on Extra Deep 4" J-Box (Min 2-1/2" Depth)
- Fixed Unit Mounting Height 1-1/2 Ft. to 6 Ft.
- Adjustable Unit Mounting Height 1-1/2 Ft. to No Max
- Flame Retardant, UV-Stabilized White Polycarbonate Housing & Reflector
- Input Voltage: Dual Voltage 120/277V
- Meets UL924 for Damp Locations
- 3 Year Warranty

CAT. NO.	OPTIC	VOLTS	MOTION SENSOR	HEIGHT	WIDTH	DEPTH	CASE QTY
MOTION SENSOR LIGHT & EMERGENCY LIGHT							
73001	FIXED	120/277V	YES	4-1/2"	4-1/2"	2-1/4"	12
73003	ADJUSTABLE	120/277V	YES	4-1/2"	4-1/2"	2-1/2"	12
EMERGENCY LIGHT							
73000	FIXED	120/277V	NO	4-1/2"	4-1/2"	2-1/4"	12
73002	ADJUSTABLE	120/277V	NO	4-1/2"	4-1/2"	2-1/2"	12

LED EMERGENCY EGRESS



- Photocell standard - allows for use as Dusk -To-Dawn fixture
- Self-diagnostic feature performs monthly, bi-annual, and annual tests to ensure reliable operation and meets electrical and life safety codes
- 4.8 Volt 2800 mAh Rechargeable Ni-Cad Battery
- Automatic, low voltage disconnect (LVD)
- Internal Solid-state Transfer Switch automatically connects the internal battery to lamp heads for a minimum of 90-minute emergency illumination
- Universal transformer for 120 or 277 VAC
- Die Cast Aluminum Housing, Powder Coat Bronze finish
- Push to test switch
- 90 minute minimum emergency operation
- Meets UL 924, NFPA 101 Life Safety Code, NEC & OSHA Codes
- Temperature Range: -22°F to 122°F
- UL 924 listed for damp locations; CEC Title 24 Certified
- 3 Year Warranty

CAT. NO.	COLD WEATHER	WATTS	VOLTS	TITLE 24	LUMENS	CASE QTY
73300	NO	12W	120/277V	NO	1,286	6
73301	YES	12W	120/277V	NO	1,286	6
73302	YES	12W	120/277V	YES	1,286	6



LED REMOTE LAMP HEADS



- Use only with LED Exit, Emergency & Combo Remote Capable Units
- Weatherproof Styles are Sealed for Use in Damp and Wet Locations
- Fully Adjustable Lamp Heads
- Housing Color: White
- **DO NOT** use LED Remote Lamp Heads with Incandescent Fixtures
- Use only with the following LED Exit/Emergency Fixtures: 73022-73025, 73054-73057, 73114-73115, 73370, 73426-73427, 73442-73444, 73454-73455, 73458, 73466, 73474-73476, 73524, 73516-73518, 73538
- 3 Year Warranty



FIG 1



FIG 2



FIG 3



FIG 4



FIG 5



FIG 6

CAT. NO.	DESCRIPTION	FIG.	DIMENSIONS			VOLTS	WATTS	LUMEN PER HEAD	CASE QTY
			W	D	G				
73074	SINGLE HEAD	1	4.53"	4.53"	5.79"	3.6V	1.17W	76	20
73075	DOUBLE HEAD	2	7.38"	4.53"	6.53"	3.6V	2.34W	76	10
73116	SINGLE HEAD	3	4.5"	2.75"	4.5"	3.6V	1.72W	76	24
73117	DOUBLE HEAD	4	6.5"	2.75"	4.75"	3.6V	3.4W	76	10
73126	SINGLE HEAD WEATHERPROOF	5	4.53"	4.53"	5.79"	3.6V	1.17W	76	20
73127	DOUBLE HEAD WEATHERPROOF	6	7.38"	4.53"	6.53"	3.6V	2.34W	76	10



LED MULTI-VOLT REMOTE LAMP HEADS

3.6V/6V/9.6V/12V

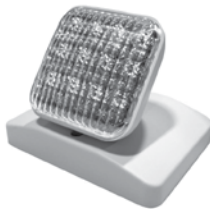


FIG 1



FIG 2



FIG 3



FIG 4

- Multi-Voltage Lamp Heads 3.6v/6v/9.6v/12v
- Use only with LED Exit, Emergency & Combo Remote Capable Units
- Weatherproof Styles are Sealed for Use in Damp and Wet Locations
- Fully Adjustable Lamp Heads
- 45 Lumens per Head
- **DO NOT** use LED Remote Lamp Heads with Incandescent Fixtures
- Meets UL924, NFPA 101 Life Safety Code, NEC, OSHA, Local and State Codes
- Suitable for wall or ceiling mount
- 3 Year Warranty

CAT. NO.	DESCRIPTION	FIG.	DIMENSIONS			COLOR	WATTS	LUMEN PER HEAD	CASE QTY
			W	D	G				
MULTI-VOLT LAMP HEADS 3.6V/6V/9.6V/12V									
73303	SINGLE HEAD	1	4.5"	2.75"	4.5"	WHITE	1W	45	12
73304	DOUBLE HEAD	2	6.5"	2.75"	4.75"	WHITE	2W	45	12
73305	SINGLE HEAD WEATHERPROOF	3	4.53"	4.53"	5.79"	GRAY	1W	45	12
73306	DOUBLE HEAD WEATHERPROOF	4	7.38"	4.53"	6.53"	GRAY	2W	45	12



VANDAL / ENVIRONMENTAL SHIELD GUARD

POLYCARBONATE

73090



73091



- High-impact resistant Polycarbonate material
- Mounting hardware provided for easy installation in the field
- Fixture Not Included

CAT. NO.	FOR USE WITH	SIZE (HT X W X D)	CASE QTY
73090	EXIT LIGHTS & CAST ALUMINUM EXIT LIGHTS	9" X 13.25" X 2.50"	16
73091	EMERGENCY LIGHTS	7" X 8.5" X 19.5"	3

WIRE GUARDS

73095



73096



- Heavy 8 Gauge Steel Shaped Wire Cage
- Mounts on wall
- Fixture Not Included

CAT. NO.	FOR USE WITH	SIZE (HT X W X D)	CASE QTY
73095	EMERGENCY LIGHTS, EXIT LIGHTS & CAST ALUMINUM EXIT LIGHTS	13.5" X 15" X 6"	10
73096	COMBO EXIT/EMERGENCY LIGHTS	13.5" X 30" X 6"	5

FLUORESCENT EMERGENCY LIGHTING BALLASTS



FIG. 1



FIG. 2

- Fluorescent Emergency Ballast allows the same fixture to be used for both normal and emergency lighting
- In the event of a Power Failure, the Ballast Switches to the Emergency Mode and operates one or two of the existing lamps for a minimum of 90 minutes
- 90 minute minimum emergency power - 24 hour recharge time
- 120/277 Volt
- Damp Location Listed
- 5 Year Warranty

Standard Ballasts

- Standard ballasts are rated for use with a variety of lamp types: T8, T9, T10, T12, U-Shaped, HO, VHO, Circuline, energy saving & 4-Pin Compact lamps
- Compatible with most one, two, three & four lamp electronic, standard energy saving & dimming AC ballasts
- 72901 & 72902 compatible with: 4 Pin Twin, Quad, Triple Twin, Long Compact & 2D Lamps

CAT. NO.	FIG.	LUMENS	LAMP TYPE	LAMP LENGTH	NO. OF LAMPS	WATTAGE	INPUT WATTAGE	VOLTS	LENGTH	WIDTH	HEIGHT	CASE QTY
72900	1	500	T8-T12	2' - 4'	1	17-40W	2.5	120/277V	9.4"	2.4"	1.5"	6
72901	2	300-650 2 PIN	CFL	N/A	1	10-26W	3.5	120/277V	9.4"	2.4"	1.5"	6
72903	1	700	T8-T12	2' - 8'	1 OR 2	17-110W	3.5	120/277V	9.4"	2.4"	1.5"	6
72904	1	1400	T8-T12	2' - 8'	1 OR 2	17-215W	4.0	120/277V	13.3"	2.4"	1.5"	6



Low Profile (Rated for T5 & T8 Ballasts - Includes a Time Delay Function)

- Low profile ballasts have a Time Delay Feature for end of life circuitry to prevent AC Ballast from shutting down when transitioning from Emergency Mode back to AC Mode
- Low Profile ballasts are rated for use with T5 & T8 single or bi-pin 1 or 2 lamp, 18-50W 4-Pin Long Compact Rapid Start, 32W 4-Pin Compact, 24-32W U-Bend FBT8 lamps from Phillips, GE, Osram or equal

CAT. NO.	LUMENS	LAMP TYPE	LAMP LENGTH	NO. OF LAMPS	WATTAGE 1 LAMP	WATTAGE 2 LAMP	INPUT WATTAGE	VOLTS	LENGTH	WIDTH	HEIGHT	CASE QTY
72910	500	T5-T8	2' - 4'	1	28W	N/A	2.5	120/277V	10"	2"	1"	6
72913	700	T5-T8	2' - 4'	1 OR 2	14-54WW	14-39	3.32/3.78	120/277V	13.8"	2"	1"	6
72914	1400	T5-T8	2' - 4'	1 OR 2	14-54	14-39	3.25/3.78	120/277V	14.2"	2"	1"	6

Accessories / Ballasts

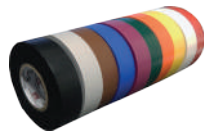
72900	12	73112	8	73343	2	73413	3
72901	12	73114	8	73344	2	73415	3
72903	12	73115	8	73346	2	73416	3
72904	12	73116	11	73348	2	73417	3
72910	12	73117	11	73360	2	73424	8
72913	12	73118	8	73363	2	73425	8
72914	12	73119	8	73364	2	73426	8
73000	10	73126	11	73366	2	73427	8
73001	10	73127	11	73369	4	73428	8
73002	10	73158	9	73370	5	73429	8
73003	10	73166	9	73371	4	73432	7
73010	1	73170	9	73372	6	73433	7
73012	1	73176	9	73373	6	73434	7
73013	1	73180	9	73374	6	73435	7
73014	1	73300	10	73375	4	73442	7
73016	1	73301	10	73376	4	73443	7
73017	1	73302	10	73377	4	73444	7
73022	1	73303	11	73378	4	73452	5
73024	1	73304	11	73379	4	73453	5
73025	1	73305	11	73380	2	73454	5
73026	1	73306	11	73381	2	73455	5
73028	1	73310	3	73382	2	73456	5
73040	7	73311	3	73383	2	73457	5
73041	7	73312	3	73384	2	73458	5
73042	7	73315	3	73385	2	73462	6
73043	7	73316	3	73386	4	73466	6
73050	7	73317	3	73387	4	73470	6
73052	7	73320	3	73388	4	73472	6
73054	7	73320	3	73389	4	73474	6
73055	7	73322	3	73396A	5	73476	6
73056	7	73322	3	73398	9	73512	1
73057	7	73330	3	73402	3	73514	1
73074	11	73331	3	73403	3	73516	1
73075	11	73332	3	73404	3	73518	1
73090	12	73335	3	73405	3	73522	8
73091	12	73336	3	73406	3	73524	8
73095	12	73337	3	73407	3	73538	7
73096	12	73340	2	73412	3		

**WIRE
MANAGEMENT**

CONNECTORS

FITTINGS

LIGHTING



MORRIS PRODUCTS INC.
53 CAREY ROAD
QUEENSBURY, NY 12804
INFO@MORRISPRODUCTS.COM
1.888.777.6678



SINGLE SOURCE...
ELECTRICAL & LIGHTING